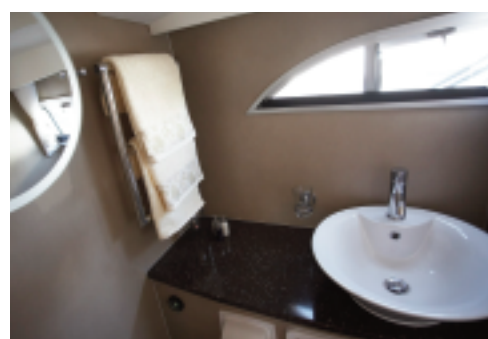


www.hainesmarine.co.uk

# Haines 350 AC



## Dimensions

LOA	34'10"	(10.60m)
Beam	12'04"	(3.80m)
Draught	3'02"	(0.90m)
Air Draught	10'02"	(3.10m)

## Technical

- Fuel capacity 550L
- Water capacity 400L
- Holding tank capacity 200L (fwd), 200L (aft)
- Full cathodic protection
- Radio/CD player
- Calorifier with immersion heater
- Sea toilets connected to holding tank
- 3-burner gas hob with oven and grill
- Fuel, water and holding tank gauges
- Antifouling
- Deck lighting and remote control
- Full set of engine instruments
- Full set of navigation lights
- 240v shore power, sockets and shore lead
- 120 amp hour domestic batteries (x3)
- 120 amp hour engine start battery (x1)
- 240v double sockets (x3)
- 12v socket for TV
- 12v electric refrigerator
- 12v socket on console
- Windscreen wipers, compass and horn
- Pelmet lighting

## Hull and Construction

- Stainless steel rubbing strake
- Stainless steel deck cleats (x8)
- Stainless steel pulpit and grab rails
- Stainless steel water, fuel and holding tanks
- Non slip GRP deck finish
- Fenders (x6) and Warps (x4)

## Accommodation

**Toilet/ shower** - To starboard with sea toilet to holding tank, vanity unit with basin and mixer tap.

**Curved Gallery** - To port with work surface, 3 burner gas hob, oven, grill and cupboard under, with mixer tap, high level shelves.

**Saloon** - To port, full length cupboards and shelves, stairs to aft deck, U-shaped settee to starboard converting to double with storage under, oval table.

**Aft Cabins** - With island berth and en-suite head with sea toilet to holding tank, vanity basin and shower, cupboard, drawer unit and 2 hanging lockers.

**Fwd Cabin** - Offset double with storage under (option of V-berths), hanging locker, bedside cabinet and shelves around berths.

**Aft Deck** - Helm to starboard, dash with full engine instruments, canopy, deck storage lockers with cushions, pushpit rail with dodgers, steps to bathing platform and swim ladder.

## Miscellaneous

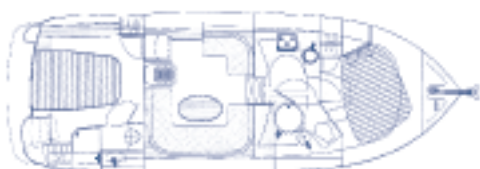
- Anodised aluminium window frames
- Tinted glass
- Saloon stools (x2)
- Ensign with staff

## Safety

- Electrical & manual bilge pumps
- Auto fire extinguisher in engine compartment (2kg)
- Manual fire extinguishers 1kg (x3)
- Wide non-slip decks
- Life buoy & boat hook



For the full range of optional extras, a price list or bespoke requests please ask a member of the sales team



To speak to one of the team, simply call:  
 Brundall office: 01603 713434 or Horning office: 01603 211033

Jan'10